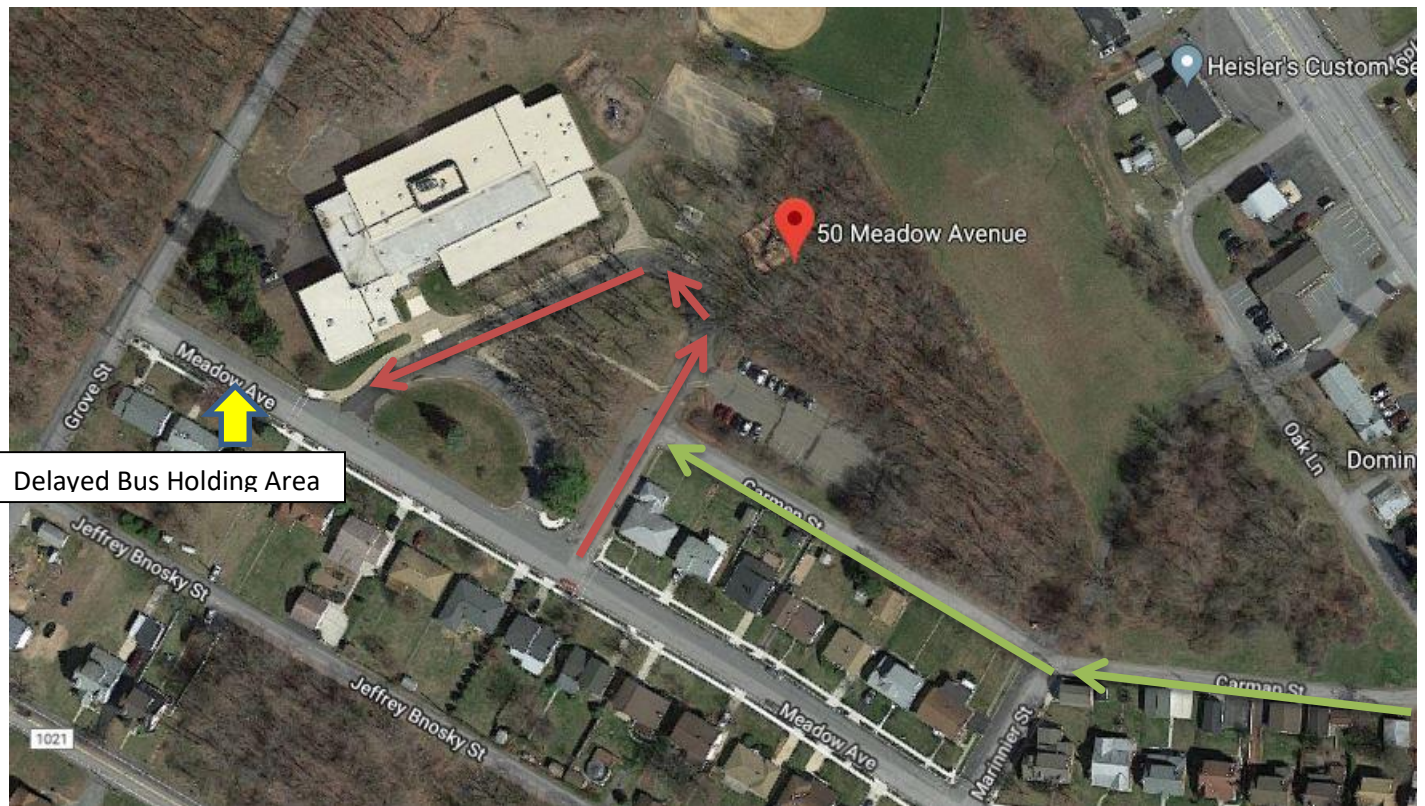


Student Arrival Procedures for St. Jerome Regional School

Whether you are a car or bus dropping off student(s) at arrival our number one priority is SAFETY. We have put these procedures in place to keep our students safe. Should you have any questions please do not hesitate to contact our Safety Coordinator, Mr. Keith Degler.

- A reminder for bus drivers and parents/guardians: Unless you are dropping a child or children off for ECP, students are not permitted in the building before 7:45 am. **This year, students will enter the building through the exterior gym doors. They will be reminded to stay socially distanced, walk through the gymnasium and wait to have their temperature scanned before entering the school lobby and going to their classroom.**
- Busses and Drivers: When arriving in the morning please use the Large Loop for student drop off. Please follow the direction of our staff. Vehicles will be brought to the designated drop off area (highlighted in orange) one by one. Once all of the students have cleared buses and vehicles our Safety Coordinator will dismiss the vehicles. Those waiting in line in the Large Loop will then be directed to pull forward and drop off.
- If you need to come into the Main Office for a scheduled appointment, please use the parking lot. The Small Loop is for emergency only.
- NO ONE should park on Meadow Ave. at any time before, during, or after the school day.



Student Dismissal Procedures for St. Jerome Regional School

Whether you are a car or bus picking up student(s) at dismissal our number one priority is SAFETY. We have put these procedures in place to keep our students safe. Should you have any questions please do not hesitate to contact our Safety Coordinator, Mr. Keith Degler.

- BUSES: Buses will be parked in the Large Loop prior to dismissal. Bus drivers will line their bus in order of arrival around the large loop. Students will be dismissed one bus at a time as each bus arrives. Once all of the buses have left the property we will lead the car drivers from Carmen St. into the Large Loop for pick up. If a bus needs to wait for a missing student who is delayed the bus will be directed to the Delayed Bus Holding Area.
- CARS: When arriving to the area around SJRS please line up single file along Carmen St. on the right side of the road so that the neighbors can access their properties from Carmen St. Once the buses have been dismissed we will direct the drivers to enter the Large Loop to park side by side. Once everyone is on the loop we will walk the students past the parked cars to connect them with their drivers. NO ONE WILL BE PERMITTED TO STAND IN FRONT OF THE SCHOOL DURING DIMISSAL. Once all students have been connected with their drivers or have been returned to the school to wait for a late pickup, we will dismiss the car drivers. Students will not be permitted to walk to car parked on Meadow Ave. **Students will be socially distanced, so this will take a little longer than it did in the past. Parents/Guardians picking up, please remain in your cars in order to keep everyone socially distanced. There may also be more cars in line this year, and because of this, we may have to allow the first set of cars to move and then pull a second round of cars in to walk the kids through the line a second time. Please be patient, especially in the first few weeks while we work this out. The plan may need to be altered as we troubleshoot and work through these new procedures. If we need to adjust the plan, we will make you all aware. Thank you.**